

GENERAL NOTES:

1. THE CONTRACTOR SHALL POSSESS THE CLASS (OR CLASSES) OF LICENSE AS SPECIFIED IN THE "NOTICE TO BIDDERS".
2. BIDDING INFORMATION  
QUESTIONS REGARDING BIDDING PROCEDURES SHOULD BE ADDRESSED TO:  
  
CITY OF VACAVILLE  
DEPARTMENT OF PUBLIC WORKS  
650 MERCHANT STREET  
VACAVILLE, CALIFORNIA 95688  
PHONE: 707-449-5170
- NO ORAL INTERPRETATIONS OF BID DOCUMENTS WILL BE MADE BY CITY STAFF. REQUESTS FOR INTERPRETATION SHALL BE MADE IN WRITING AND DELIVERED TO THE CITY AT LEAST 7 WORKING DAYS BEFORE BID OPENING. INTERPRETATIONS BY THE CITY WILL BE IN THE FORM OF AN ADDENDUM.
3. THESE PLANS SHALL BE SUPPLEMENTED BY STATE OF CALIFORNIA DEPARTMENT OF TRANSPORTATION STANDARD PLANS AND SPECIFICATIONS DATED 2018 AND CITY OF VACAVILLE STANDARD DRAWINGS AND SPECIFICATIONS (CURRENT EDITION).
4. THE CONTRACTOR SHALL VERIFY ALL CONTROLLING FIELD DIMENSIONS BEFORE ORDERING OR FABRICATING ANY MATERIAL.
5. BEFORE EXCAVATING CALL U.S.A. UNDERGROUND SERVICE ALERT (800-227-2600) 48 HOURS BEFORE ALL PLANNED WORK OPERATIONS.
6. THESE PLANS ARE THE PROPERTY AND COPYRIGHT OF THE CITY OF VACAVILLE AND SHALL NOT BE USED ON ANY OTHER WORK EXCEPT BY WRITTEN AGREEMENT WITH THE CITY OF VACAVILLE. WRITTEN DIMENSIONS SHALL TAKE PRECEDENCE OVER SCALED DIMENSIONS AND FIELD DIMENSIONS SHALL BE VERIFIED ON THE JOB SITE. ANY DISCREPANCY SHALL BE BROUGHT TO THE NOTICE OF THE ENGINEER PRIOR TO THE START OF ANY WORK.
7. POTHOLE DATA WAS PROVIDED BY BESS TEST LABS IN MAY 2021. LOCATION AND DEPTH OF EXISTING NON-POTHOLED UTILITIES ARE APPROXIMATE PER AVAILABLE RECORDS OF VARYING RELIABILITY. CONTRACTOR SHALL FIELD VERIFY LOCATIONS AND DEPTHS OF ALL EXISTING UTILITIES BY POTHOLES PRIOR TO INSTALLATION OF PROPOSED UTILITIES.

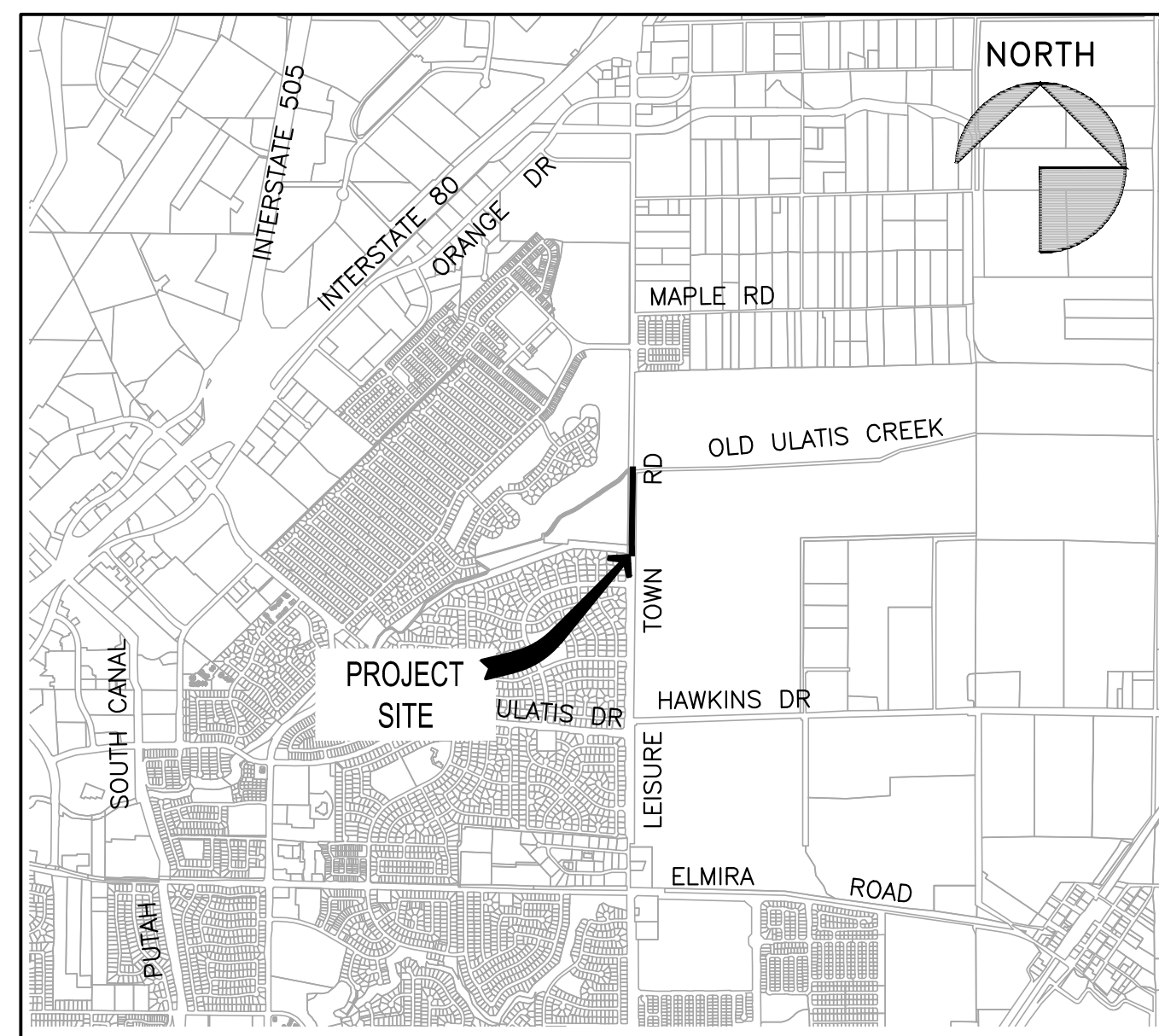
# CITY OF VACAVILLE DEPARTMENT OF PUBLIC WORKS

● VACAVILLE ● SOLANO COUNTY ● CALIFORNIA ●

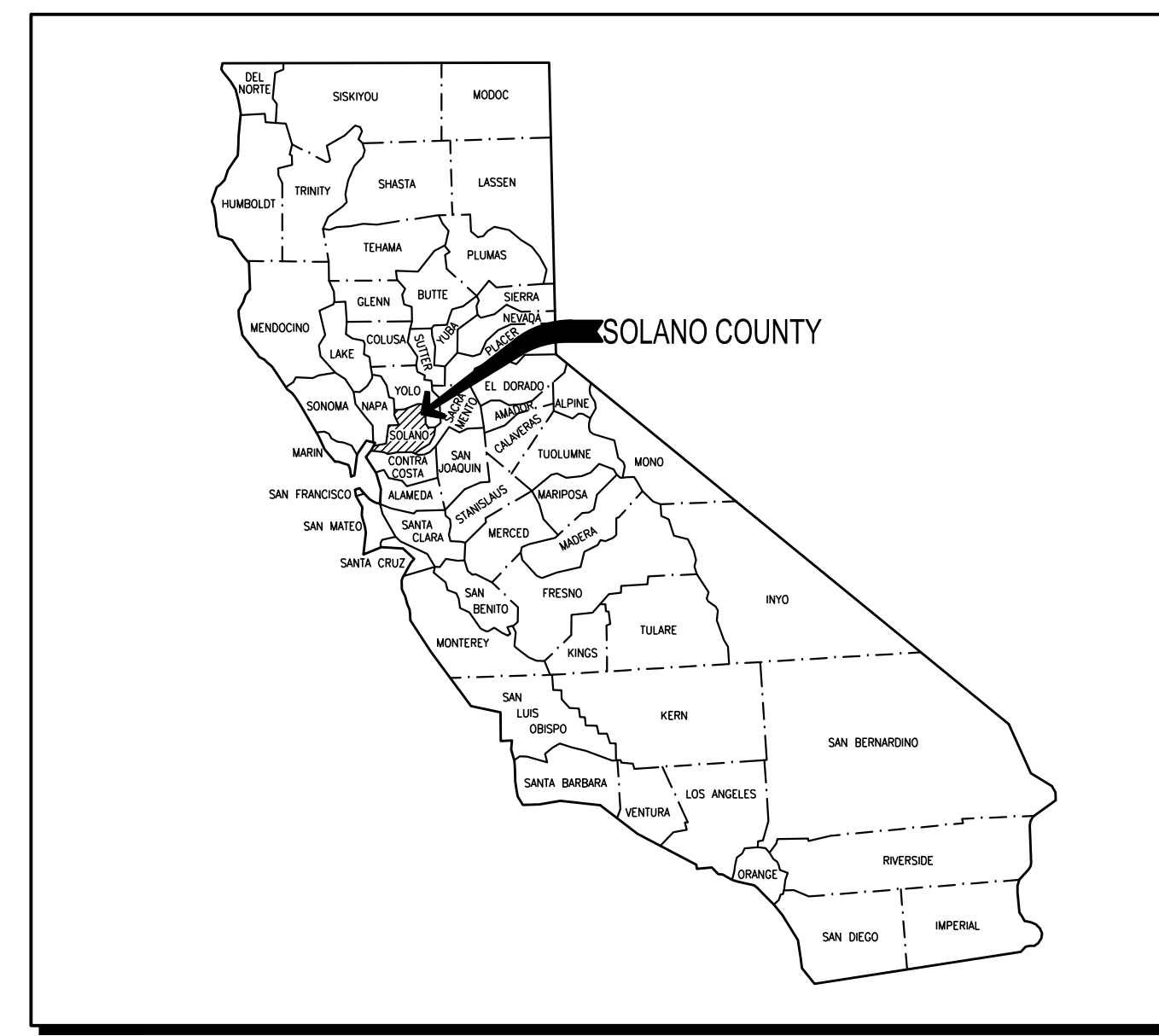
## PLANS FOR JEPSON PARKWAY - PHASE 3A MARCH 2024

SHEET INDEX:

NO.	TYPE	TITLE
1	T-1	TITLE SHEET
2	(D)	DEMOLITION PLANS
3	(X)	TYPICAL SECTIONS
4-5	(R)	ROAD PLAN AND PROFILE SHEETS
6-7	(U)	UTILITY PLAN AND PROFILE SHEETS
9	(SS)	SIGNAGE AND STRIPING PLANS
10-11	(L2)	PLANTING PLANS AND DETAILS



VICINITY MAP



LOCATION MAP

DWG File: \\gndnet\gnd\US\Roseville\Projects\561\11212368\Digital\_Design\ACAD\_2019 - PWSA\Plans\949-311.dwg; Last Edit: 8/26/20; RPLAZA-MARTINEZ

NO.	DATE	DESCRIPTION	BY

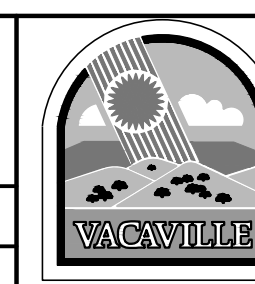


APPROVED BY:  
  
TIMOTHY F. BURKE R.C.E. 52989  
INTERIM DIRECTOR OF PUBLIC WORKS

100 % PLANS  
NOT FOR  
CONSTRUCTION

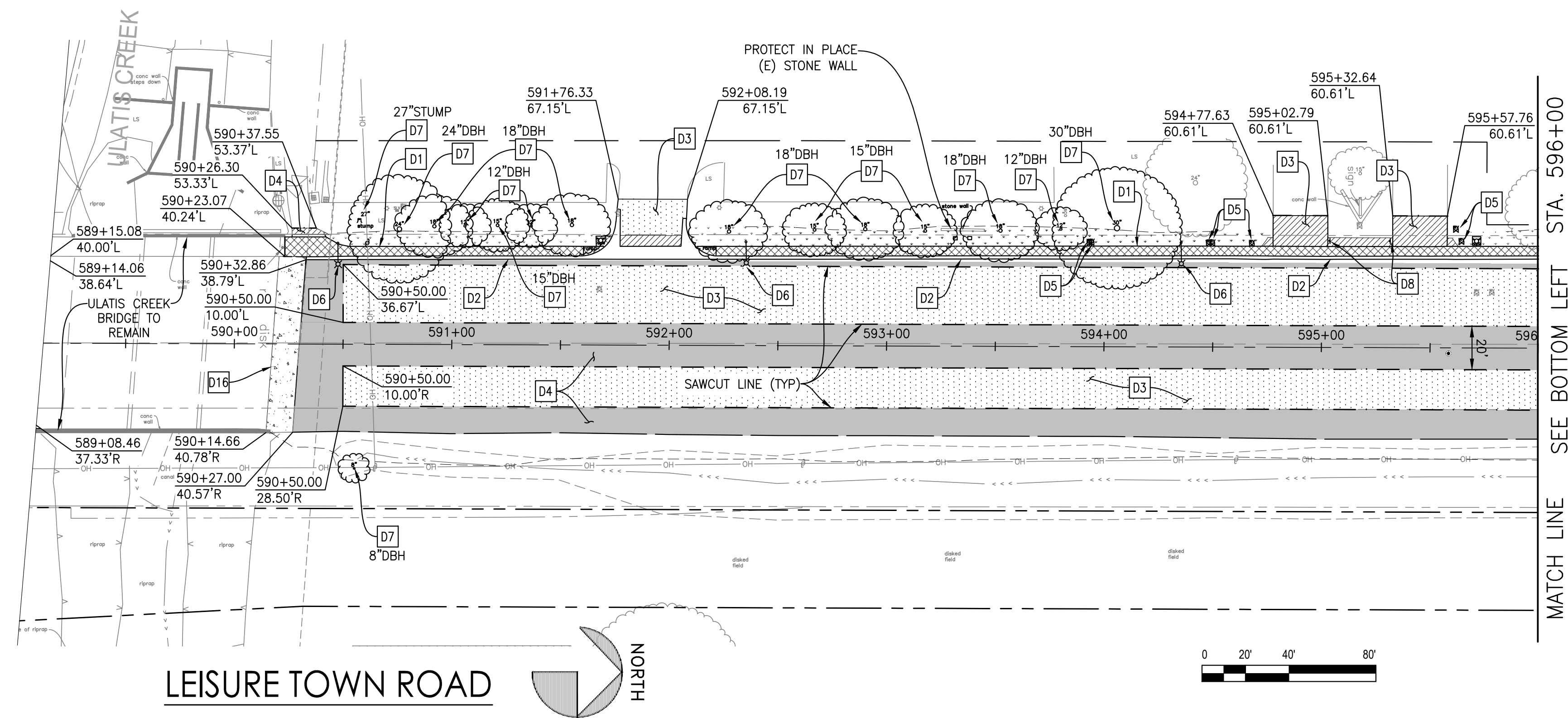
DRAWN By C. PHELPS Checked D. KEHRER  
DESIGN By R. BELTRAN Checked J. SCHMAL  
QUANTITIES By C. DOUD Checked D. KEHRER  
SCALE: HORIZONTAL: AS SHOWN VERTICAL: AS SHOWN  
ORIGINAL SCALE IS IN INCHES FOR REDUCED PLANS

**CITY OF VACAVILLE**  
DEPARTMENT OF PUBLIC WORKS

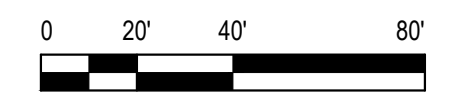
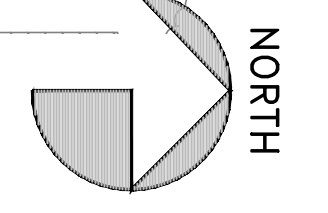


JEPSON PARKWAY - PHASE 3A			
TITLE SHEET			
T-1			
Level of Submittal: 100%	CIP:	Project Account:	DISREGARD PRINTS BEARING EARLIER PLOT DATES →
DATE PLOTTED	SHEET	OF	
03/14/24	1	12	

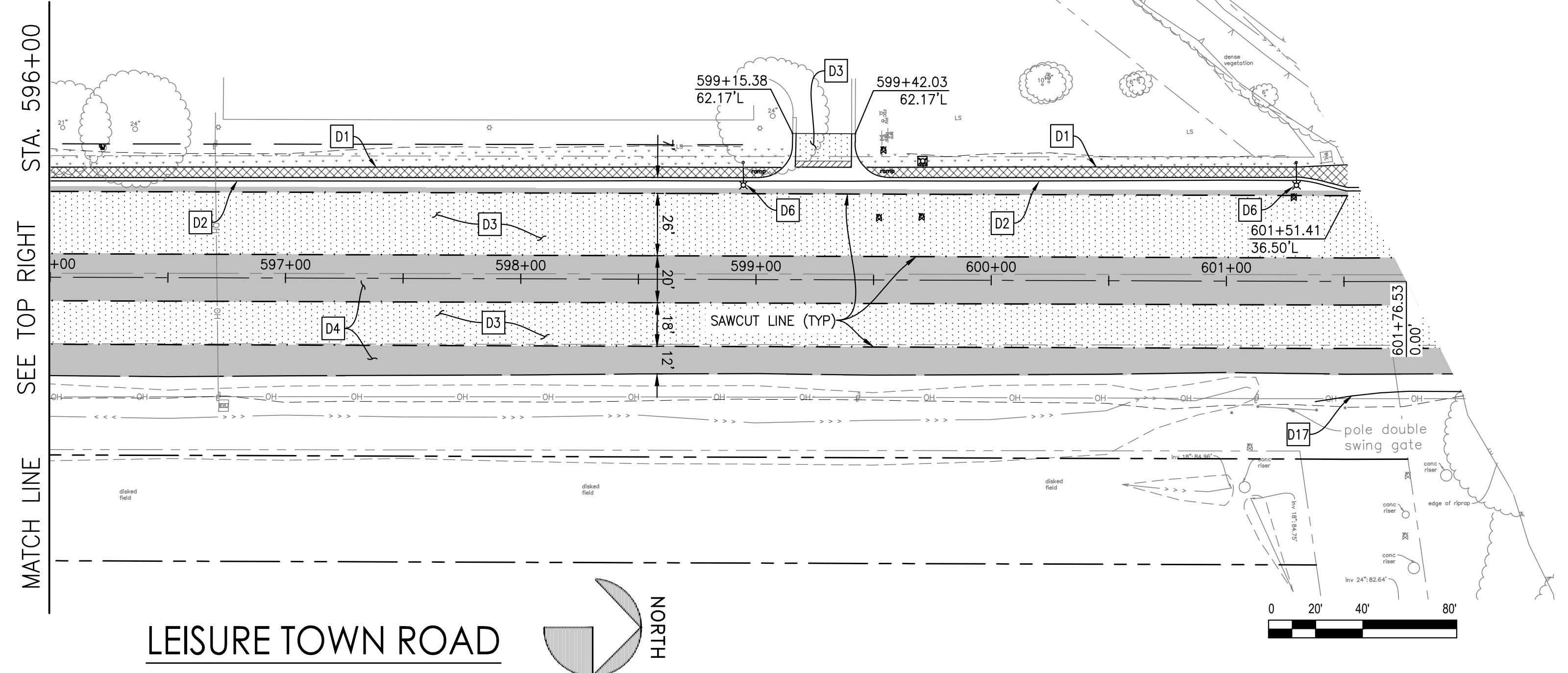
D:\g\h\m\p\us\ros\proj\561\11212368\Digital\_Design\ACAD\_2019 - PISA\Plans\948-9500.dwg; Last Edit: 8/26/20; RPJAZA-MARTINEZ



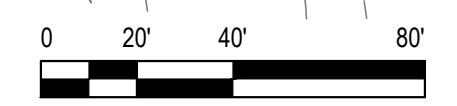
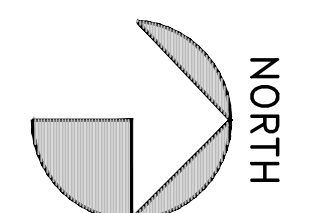
LEISURE TOWN ROAD



MATCH LINE SEE BOTTOM LEFT STA. 596+00



LEISURE TOWN ROAD



MATCH LINE SEE TOP RIGHT STA. 596+00

**DEMOLITION KEYNOTES**

- D1 REMOVE EXISTING PCC SIDEWALK TO THE NEAREST DEEP JOINT
- D2 REMOVE CONCRETE CURB AND GUTTER
- D3 COLD PLANE EXISTING ASPHALT (0.2' DEEP)
- D4 REMOVE EXISTING ASPHALT AND BASE MATERIAL (FULL DEPTH)
- D5 RELOCATE EXISTING IRRIGATION VALVE
- D6 REMOVE AND SALVAGE EXISTING STREET LIGHT AND DELIVER TO CITY'S CORPORATION YARD
- D7 REMOVE EXISTING TREE/STUMP (SIZE PER PLAN)
- D8 REMOVE AND SALVAGE EXISTING ROADSIDE SIGN
- D9 RELOCATE TRAFFIC SIGNAL BOX PER SIGNAL PLANS
- D10 EXISTING TELEPHONE PEDESTAL TO BE RELOCATED BY OTHERS
- D11 SID CANAL RELOCATION BY OTHERS
- D12 REMOVE CONCRETE MOW STRIP
- D13 DEMOLISH EXISTING LANDSCAPING AND IRRIGATION. CONTRACTOR SHALL CONFIRM SHUT OFF LOCATION FOR EXISTING IRRIGATION PRIOR TO DEMOLITION.
- D14 EXISTING OVERHEAD UTILITIES AND POLES TO BE RELOCATED BY OTHERS
- D15 REMOVE EXISTING SIDEWALK UNDERDRAIN
- D16 REMOVE EXISTING CONCRETE APPROACH SLAB
- D17 REMOVE EXISTING GUARD RAIL
- D18 REMOVE EXISTING RIP RAP

**NOTES**

1. SAWCUT LINES AND LIMITS OF DEMOLITION SHOWN ARE APPROXIMATE. CONTRACTOR MAY ADJUST SAWCUT LINES AND LIMITS OF DEMOLITION AS NECESSARY TO INSTALL PROPOSED IMPROVEMENTS AND CONFORM TO EXISTING MATCH POINTS.
2. SEE SIGNAL PLANS FOR REMOVAL AND/OR RELOCATION OF EXISTING TRAFFIC SIGNAL FACILITIES UNLESS OTHERWISE NOTED.
3. SEE UTILITY PLANS FOR EXISTING UNDERGROUND UTILITY INFORMATION AS WELL AS WATER, SEWER, AND STORM DRAIN DEMOLITION LIMITS.
4. SEE UTILITY PLANS FOR EXISTING MANHOLES, VALVES, AND BOXES THAT NEED TO BE ADJUSTED TO FINISHED GRADE.
5. SEE STREET LIGHT PLANS FOR DETAILS REGARDING MODIFICATIONS TO THE EXISTING STREET LIGHT SYSTEM. STREET LIGHTS TO BE REMOVED SHALL BE SALVAGED AND DELIVERED TO THE CITY'S CORP. YARD, REFER TO PROJECT SPECIFICATIONS FOR ADDITIONAL DETAILS.
6. MONUMENT BOXES TO BE ADJUSTED TO FINISH GRADE PER ROADWAY PLANS AND PER CITY STANDARDS (TYP).

**LEGEND**

- COLD PLANE EXISTING AC PAVEMENT
- REMOVE EXISTING ROADWAY STRUCTURAL SECTION
- REMOVE EXISTING PCC SIDEWALK TO NEAREST DEEP JOINT
- REMOVE EXISTING LANDSCAPING
- REMOVE EXISTING CONCRETE APPROACH SLAB
- REMOVE EXISTING SECTION TO SUBGRADE

NO.	DATE	DESCRIPTION	BY

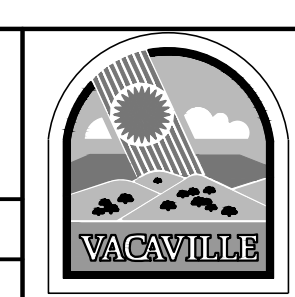


APPROVED BY:  
TIMOTHY F. BURKE R.C.E. 52989  
INTERIM DIRECTOR OF PUBLIC WORKS

**100 % PLANS  
NOT FOR  
CONSTRUCTION**

DRAWN By R. MARTINEZ Checked R. BELTRAN  
DESIGN By R. BELTRAN Checked J. SCHMAL  
QUANTITIES By C. DOUD Checked D. KEHRER

**CITY OF VACAVILLE**  
DEPARTMENT OF PUBLIC WORKS



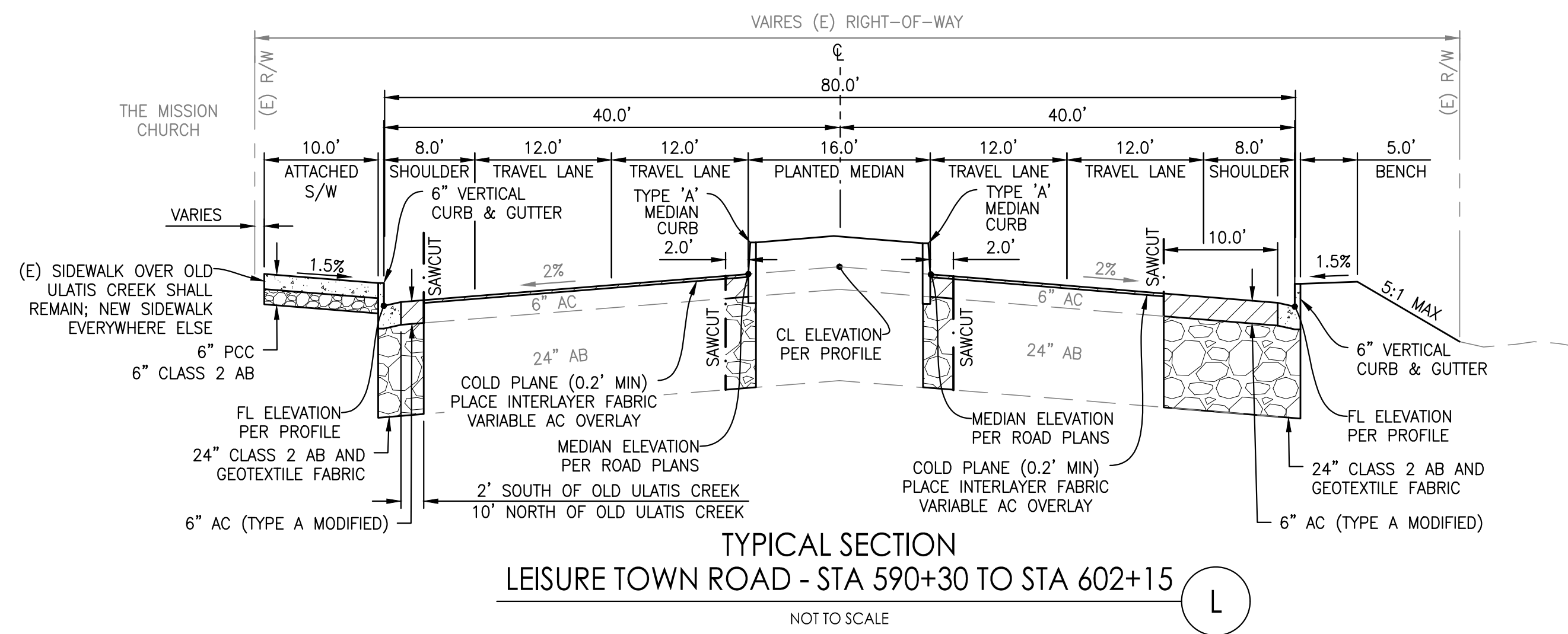
**JEPSON PARKWAY - PHASE 3A**

LEISURE TOWN ROAD (ELMIRA RD TO 556+00) D-1

DEMOLITION PLAN

Level of Submittal: 100%	CIP:	Project Account:	DISREGARD PRINTS BEARING EARLIER PLOT DATES	DATE PLOTTED: 03/14/24	SHEET: 2	OF: 12
--------------------------	------	------------------	---	------------------------	----------	--------

DWG File: \\ghdnet\gnd\US\Reserve\Projects\561\11212368\Digital\_Design\CAD\_2019 - PHSA\Plans\4B-TYP\_SECT.dwg; Last Edit: 8/26/20; RPLAZA-MARTINEZ



TYPICAL SECTION  
LEISURE TOWN ROAD - STA 590+30 TO STA 602+15  
NOT TO SCALE

REVISIONS			
NO.	DATE	DESCRIPTION	BY

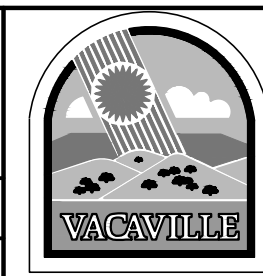


APPROVED BY:  
TIMOTHY F. BURKE R.C.E. 52989  
INTERIM DIRECTOR OF PUBLIC WORKS

**100 % PLANS  
NOT FOR  
CONSTRUCTION**

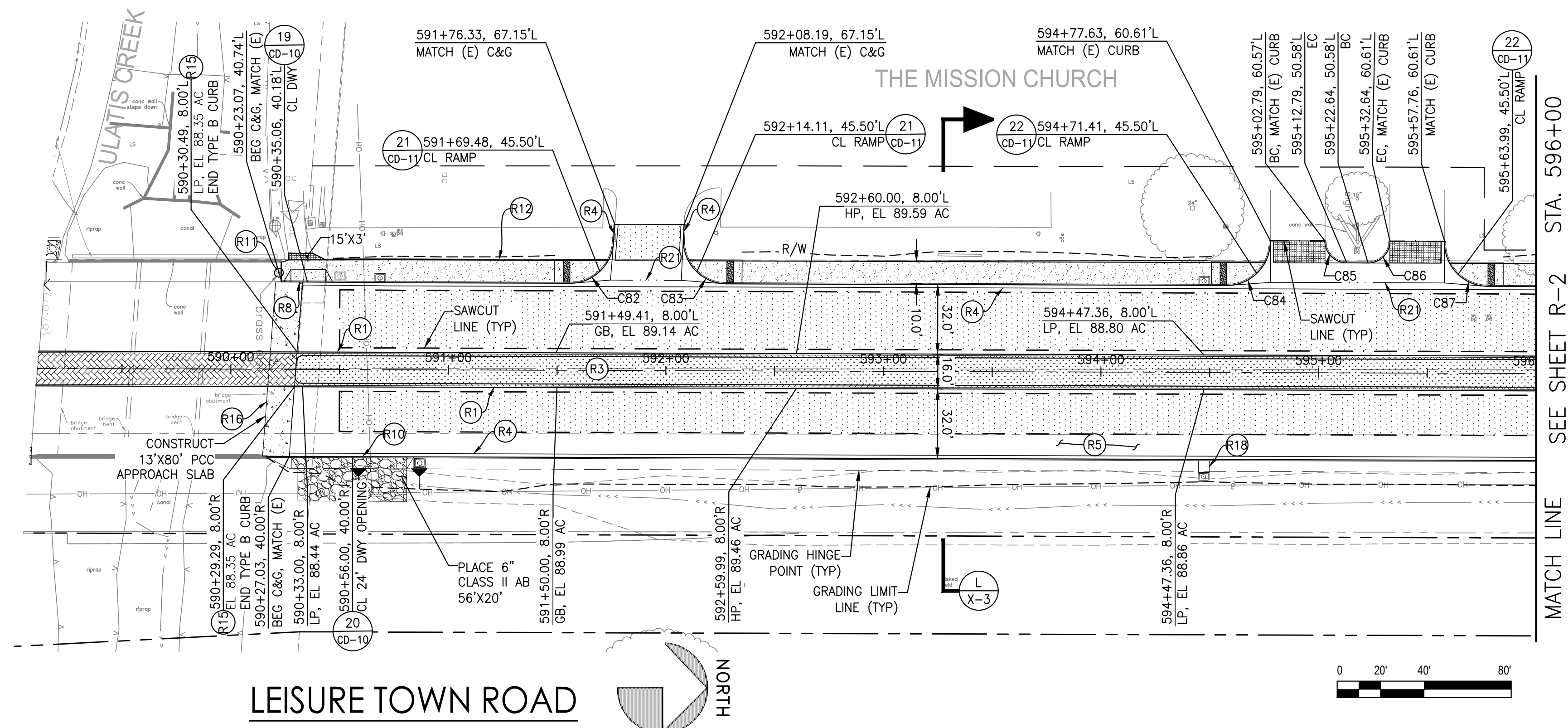
DRAWN	By C. PHELPS	Checked D. KEHRER
DESIGN	By R. BELTRAN	Checked J. SCHMAL
QUANTITIES	By C. DOUD	Checked D. KEHRER

**CITY OF VACAVILLE**  
DEPARTMENT OF PUBLIC WORKS



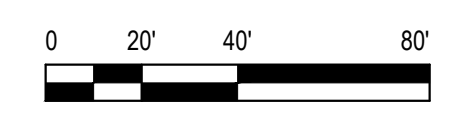
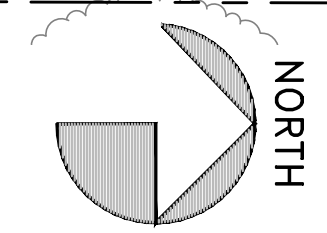
JEPSON PARKWAY - PHASE 3A			
TYPICAL SECTIONS 1			
X-1			
Level of Submittal: 100%	CIP:	Project Account:	DISREGARD PRINTS BEARING EARLIER PLOT DATES →
DATE PLOTTED: 03/14/24	SHEET: 3	OF: 12	

SCALE: HORIZONTAL: AS SHOWN VERTICAL: AS SHOWN  
ORIGINAL SCALE IS IN INCHES FOR REDUCED PLANS

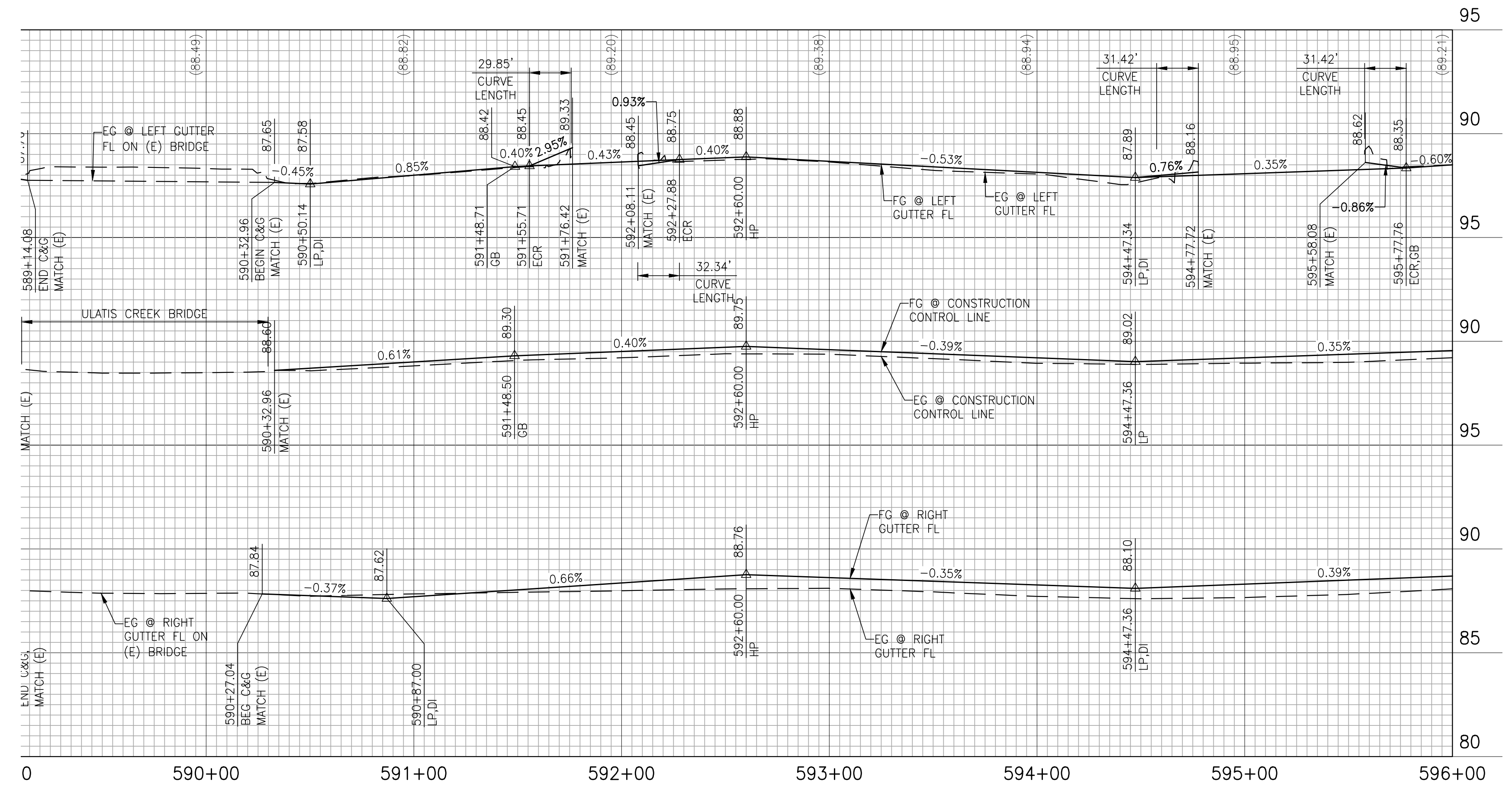


MATCH LINE SEE SHEET R-2 STA. 596+00

**LEISURE TOWN ROAD**



- ROADWAY KEYNOTES**
- (R1) CONSTRUCT CITY STD MEDIAN CURB, TYPE A
  - (R2) CONSTRUCT STAMPED CONCRETE
  - (R3) LANDSCAPE (SEE LANDSCAPE PLANS)
  - (R4) CONSTRUCT CITY STD CURB AND GUTTER
  - (R5) CONSTRUCT AC OVER CL II AB
  - (R6) CONSTRUCT AC DIKE (TYPE A) PER CALTRANS STD PLAN A87B
  - (R7) SID CHANNEL RELOCATION BY OTHERS
  - (R8) DRIVEWAY PER DETAIL 4 SHEET CD-15
  - (R9) INSTALL MEDIAN DRAINAGE BREAK PER DETAIL 5 SHEET CD-14
  - (R10) CONSTRUCT DRIVEWAY OPENING
  - (R11) ADJUST CITY MONUMENT TO FINISHED GRADE
  - (R12) CONSTRUCT RETAINING CURB
  - (R13) INSTALL END OF SIDEWALK BARRICADE PER DETAIL 2 SHEET CD-17
  - (R14) CONSTRUCT EARTHEN DRAINAGE DITCH PER DETAIL 8 SHEET CD-15
  - (R15) CONSTRUCT CITY STD MEDIAN CURB, TYPE B
  - (R16) CONSTRUCT PCC STRUCTURE APPROACH SLAB (TYPE EQ) PER CALTRANS STD PLAN B9-4
  - (R17) POWER WASH AND PAINT EXISTING SOUNDWALL
  - (R18) CONSTRUCT CONCRETE GUTTER CONNECTION WITH CURB OPENING PER DETAIL 1 SHEET CD-16
  - (R19) CONSTRUCT FILTERRA OFFLINE SIDEWALK FLUME PER DETAIL 2 SHEET CD-16
  - (R20) CONSTRUCT FILTERRA WITH TERRAFLUME SIDEWALK FLUME PER DETAIL 3 SHEET CD-16
  - (R21) CONSTRUCT VALLEY GUTTER PER DETAIL 6 SHEET CD-16
- LEGEND**
- MINOR CONCRETE (SIDEWALK, DRIVEWAY, CURB RAMP)
  - STAMPED CONCRETE PAVING
  - LANDSCAPE (SEE LANDSCAPE PLANS)
  - VARIABLE HMA OVERLAY
  - PORTLAND CEMENT CONCRETE
  - 3" HMA/3" CLASS II AB OR MATCH (E) THICKNESS WHICHEVER IS GREATER



**LEISURE TOWN ROAD**  
SCALE: HORIZ SCALE 1"=40', VERT 1"=4'

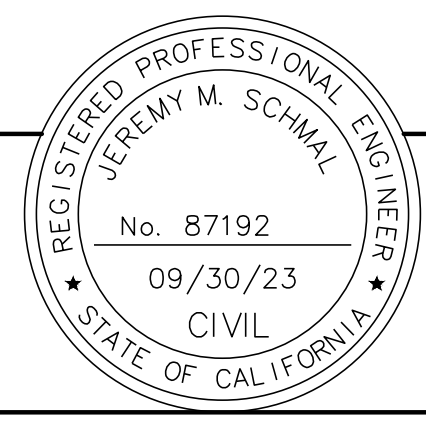
#	RADIUS	LENGTH	DELTA	CHORD
C6	1250.00'	143.15'	6°33'41"	N02°39'00"W, 143.07'
C7	1305.00'	153.78'	6°45'05"	N02°33'18"W, 153.69'

#	RADIUS	LENGTH	DELTA	CHORD
C82	20.00'	29.85'	085°30'14"	N41°55'52"W, 27.15'
C83	20.00'	32.34'	092°39'35"	N47°09'03"E, 28.93'
C84	20.00'	31.42'	090°00'00"	N44°10'45"W, 28.28'
C85	10.01'	15.69'	089°49'02"	N45°47'05"E, 14.13'
C86	10.01'	15.73'	090°03'32"	N44°14'40"W, 14.16'
C87	20.00'	31.42'	090°00'36"	N45°49'15"E, 28.28'

DWS File: \\gndnet\us\US\Reserve\Projects\561\112386\Digital\_Design\ACAD 2019 - PISA\Plans\948-ROAD.dwg, Last Edit: 9/16/20, RPLA2A-MARTINEZ

NO.	DATE	DESCRIPTION	BY

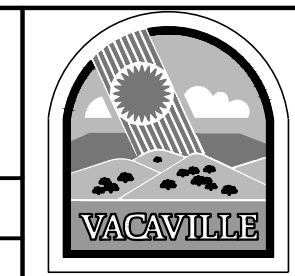


APPROVED BY:  
TIMOTHY F. BURKE R.C.E. 52989  
INTERIM DIRECTOR OF PUBLIC WORKS

**100 % PLANS  
NOT FOR  
CONSTRUCTION**

DRAWN By R. BELTRAN Checked J. SCHMAL  
DESIGN By R. BELTRAN Checked J. SCHMAL  
QUANTITIES By C. DOUD Checked D. KEHRER

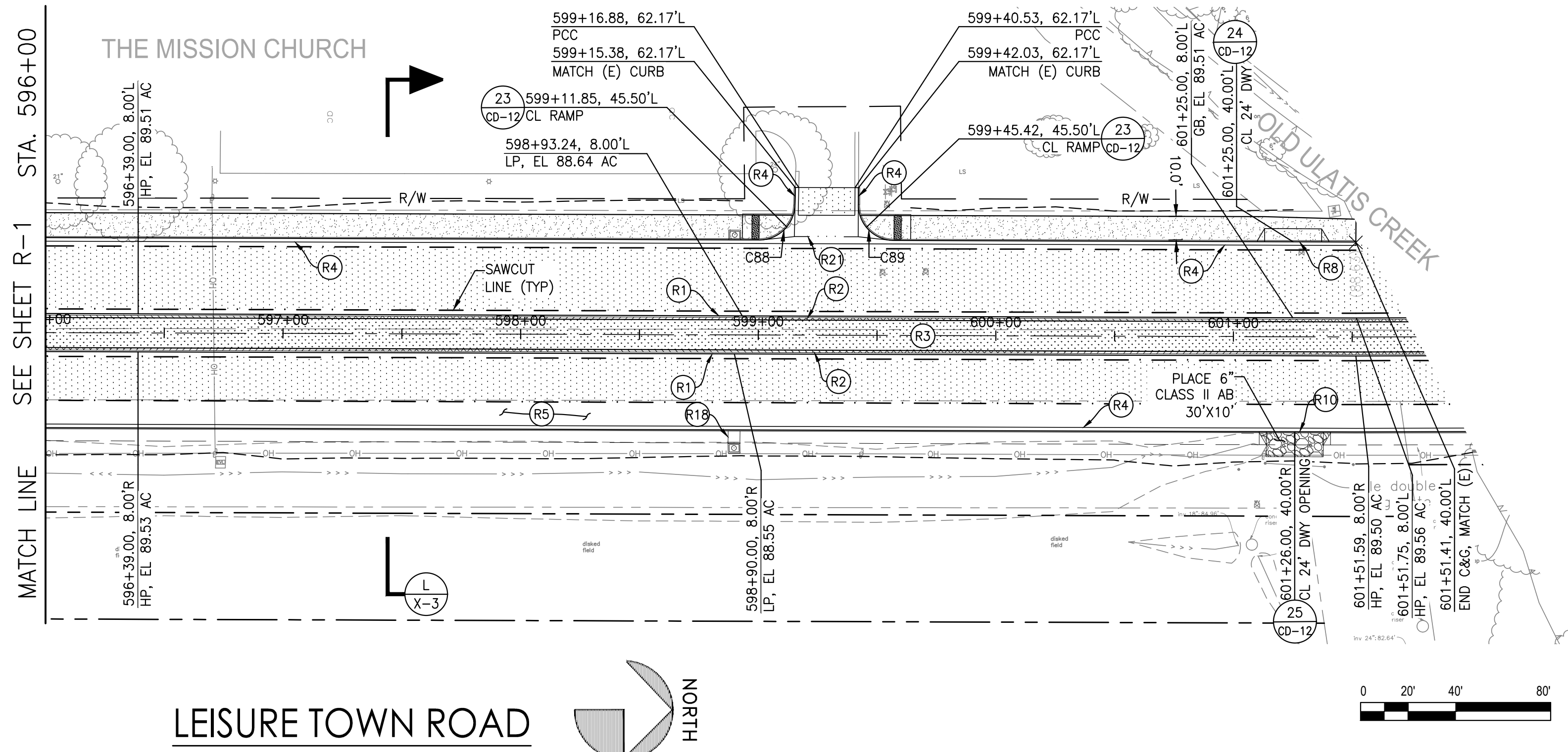
**CITY OF VACAVILLE**  
DEPARTMENT OF PUBLIC WORKS



**JEPSON PARKWAY - PHASE 3A**  
LEISURE TOWN RD (ELMIRA RD TO 546+00)  
ROAD PLAN AND PROFILE R-1

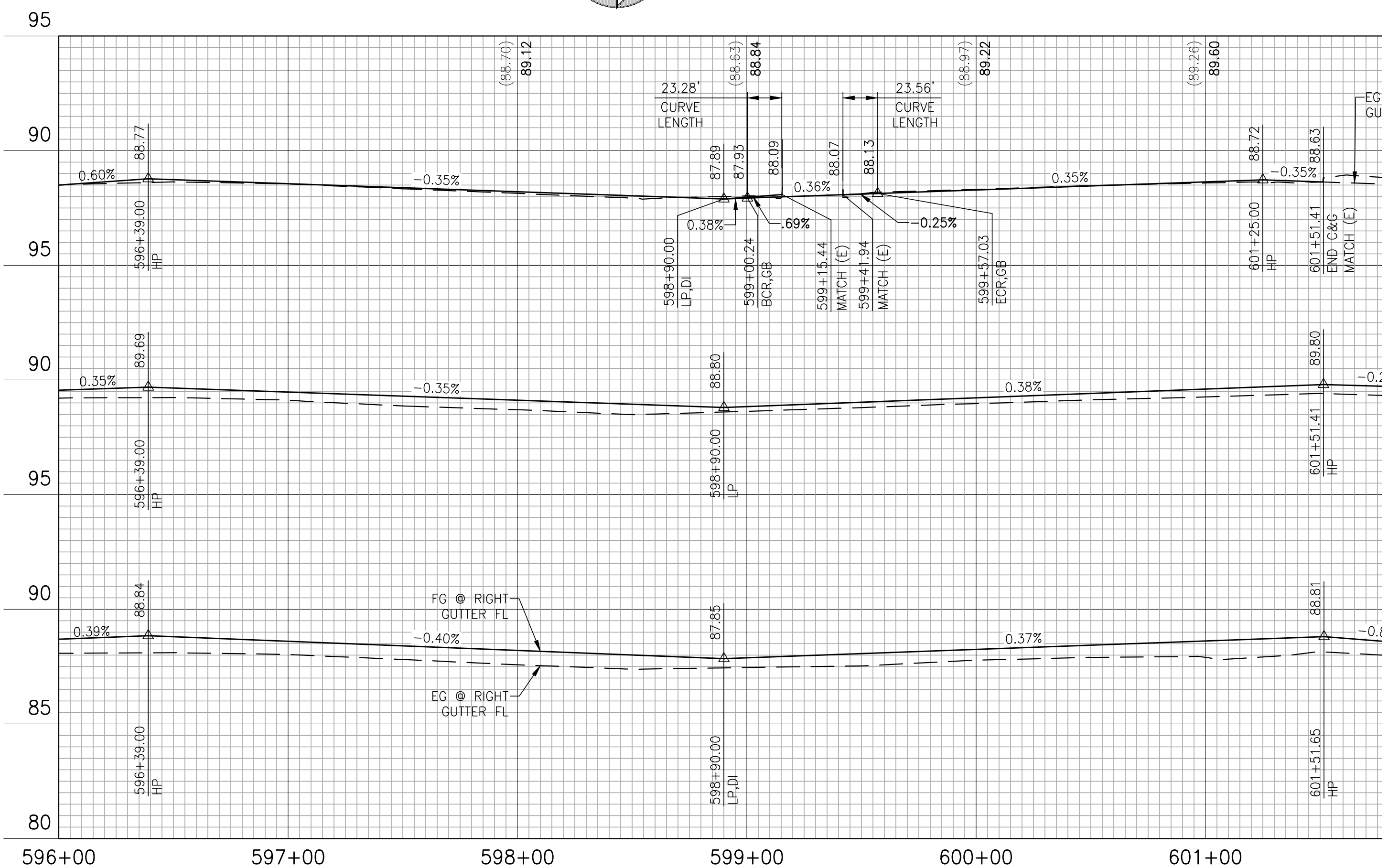
Level of Submittal: 100%	CIP:	Project Account:	DISREGARD PRINTS BEARING EARLIER PLOT DATES	DATE PLOTTED: 03/14/24	SHEET: 4	OF: 12
--------------------------	------	------------------	---	------------------------	----------	--------

DWG File: \\gndnet\proj\US\Roseville\Projects\561\11212368\Digital\_Design\ACAD\_2019 - PH3A\Plans\94B-ROAD.dwg; Last Edit: 9/16/20, RPLA3A-MARTINEZ



- ROADWAY KEYNOTES**
- (R1) CONSTRUCT CITY STD MEDIAN CURB, TYPE A
  - (R2) CONSTRUCT STAMPED CONCRETE
  - (R3) LANDSCAPE (SEE LANDSCAPE PLANS)
  - (R4) CONSTRUCT CITY STD CURB AND GUTTER
  - (R5) CONSTRUCT AC OVER CL II AB
  - (R6) CONSTRUCT AC DIKE (TYPE A) PER CALTRANS STD PLAN A87B
  - (R7) SID CHANNEL RELOCATION BY OTHERS
  - (R8) DRIVEWAY PER DETAIL 4 SHEET CD-15
  - (R9) INSTALL MEDIAN DRAINAGE BREAK PER DETAIL 5 SHEET CD-14
  - (R10) CONSTRUCT DRIVEWAY OPENING
  - (R11) ADJUST CITY MONUMENT TO FINISHED GRADE
  - (R12) CONSTRUCT RETAINING CURB
  - (R13) INSTALL END OF SIDEWALK BARRICADE PER DETAIL 2 SHEET CD-17
  - (R14) CONSTRUCT EARTHEN DRAINAGE DITCH PER DETAIL 8 SHEET CD-15
  - (R15) CONSTRUCT CITY STD MEDIAN CURB, TYPE B
  - (R16) CONSTRUCT PCC STRUCTURE APPROACH SLAB (TYPE EQ) PER CALTRANS STD PLAN B9-4
  - (R17) POWER WASH AND PAINT EXISTING SOUNDWALL
  - (R18) CONSTRUCT CONCRETE GUTTER CONNECTION WITH CURB OPENING PER DETAIL 1 SHEET CD-16
  - (R19) CONSTRUCT FILTERRA OFFLINE SIDEWALK FLUME PER DETAIL 2 SHEET CD-16
  - (R20) CONSTRUCT FILTERRA WITH TERRAFLUME SIDEWALK FLUME PER DETAIL 3 SHEET CD-16
  - (R21) CONSTRUCT VALLEY GUTTER PER DETAIL 6 SHEET CD-16

- LEGEND**
- MINOR CONCRETE (SIDEWALK, DRIVEWAY, CURB RAMP)
  - STAMPED CONCRETE PAVING
  - LANDSCAPE (SEE LANDSCAPE PLANS)
  - VARIABLE HMA OVERLAY
  - PORTLAND CEMENT CONCRETE
  - 3" HMA/3" CLASS II AB OR MATCH (E) THICKNESS WHICHEVER IS GREATER



FACE OF CURB CURVE TABLE				
#	RADIUS	LENGTH	DELTA	CHORD
CB8	15.00'	23.28'	088°56'24"	N43°38'57"W, 21.02'
CB9	15.00'	23.56'	089°58'53"	N45°48'42"E, 21.21'

**LEISURE TOWN ROAD**  
 SCALE: HORIZ SCALE 1"=40', VERT 1"=4'

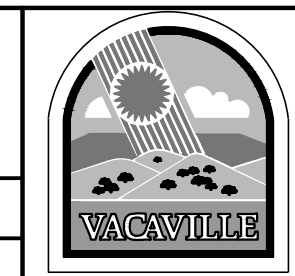
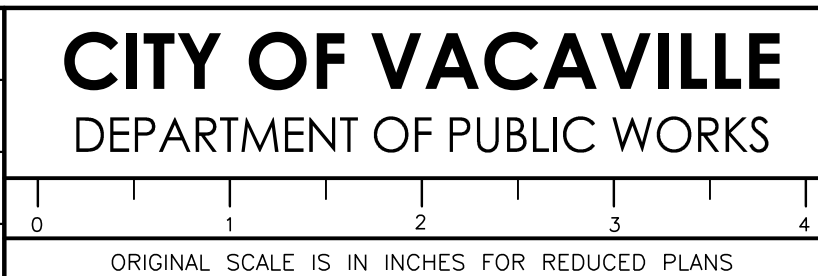
REVISIONS			
NO.	DATE	DESCRIPTION	BY



APPROVED BY:  
 TIMOTHY F. BURKE R.C.E. 52989  
 INTERIM DIRECTOR OF PUBLIC WORKS

**100 % PLANS  
 NOT FOR  
 CONSTRUCTION**

DRAWN By R. BELTRAN Checked J. SCHMAL  
 DESIGN By R. BELTRAN Checked J. SCHMAL  
 QUANTITIES By C. DOUD Checked D. KEHRER

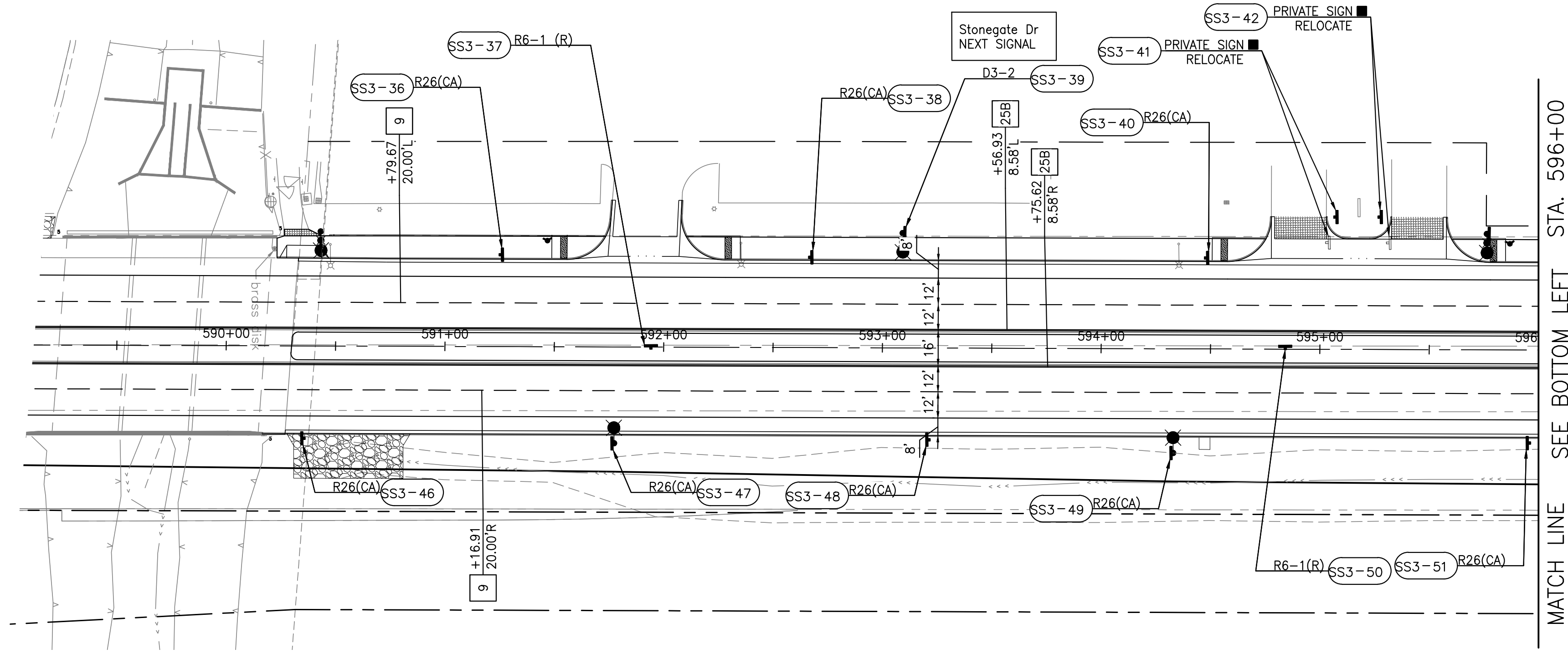


**JEPSON PARKWAY - PHASE 3A**  
 LEISURE TOWN ROAD (546+00 TO 556+00)  
 ROAD PLAN AND PROFILE

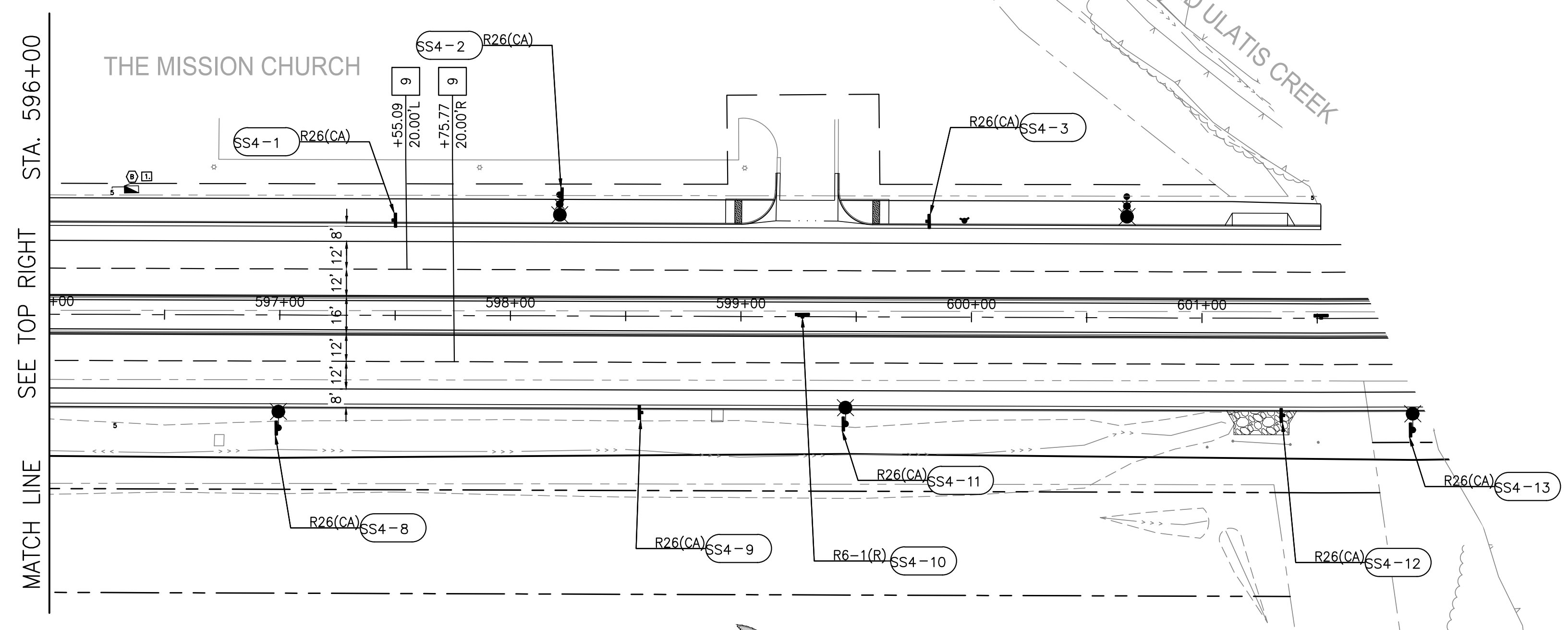
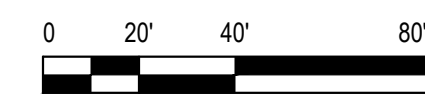
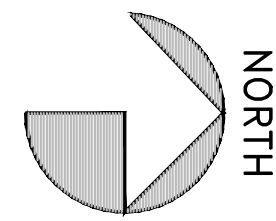
R-2

Level of Submittal: 100%	CIP:	Project Account:	DISREGARD PRINTS BEARING EARLIER PLOT DATES	DATE PLOTTED: 03/14/24	SHEET: 5	OF: 12
--------------------------	------	------------------	---	------------------------	----------	--------

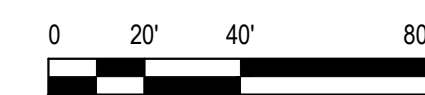
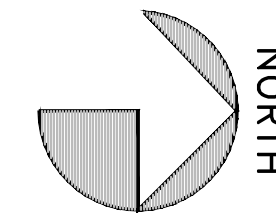
D:\gdm\p\us\res\vacaville\projects\561\11212368\Digital\_Design\CAD\_2019 - PH3A\Plans\949-STRIP.dwg: Last Edit: 8/26/20, RPLA2A-MARTINEZ



LEISURE TOWN ROAD



LEISURE TOWN ROAD



**LEGEND**

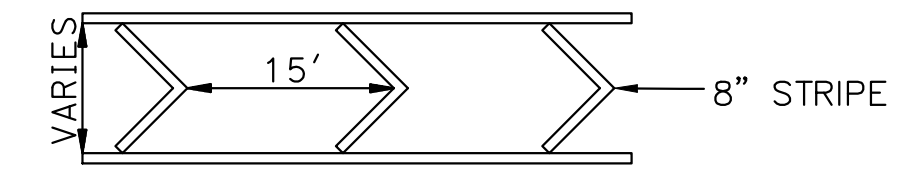
- [X] APPLY STRIPE PER CALTRANS DETAIL NUMBER SHOWN
- REMOVE ROADSIDE SIGN
- ◆ EXISTING ROADSIDE SIGN TO REMAIN
- ROADSIDE SIGN TO RELOCATE
- ROADSIDE SIGN - ONE POST
- SIGN MOUNTED ON POLE WITH STRAP AND SADDLE BRACKET METHOD (SSBM)
- EXISTING ROADSIDE SIGN (SSBMO)
- EXISTING ONE POST ROADSIDE SIGN
- EXISTING TWO POST ROADSIDE SIGN
- ↙ TYPE IV (Lt) ARROW
- ↘ TYPE IV (Rt) ARROW
- ↖ TYPE VI ARROW
- ↗ TYPE VII ARROW
- ↕ TYPE I (10') ARROW
- ↻ U-TURN ARROW
- STOP PAVEMENT MARKER
- ONLY PAVEMENT MARKER
- BIKE LANE PAVEMENT MARKINGS

**NOTES**

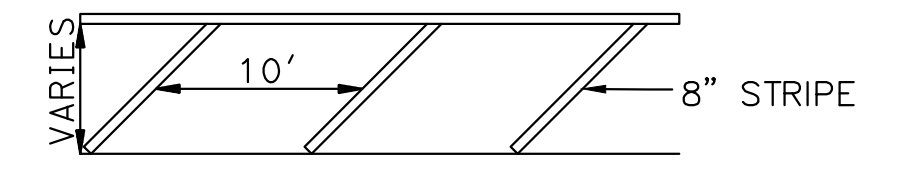
1. FOR ACCURATE RIGHT OF WAY DATA, CONTACT RIGHT OF WAY ENGINEER AT THE DISTRICT
2. FEDERAL SIGN CODES ARE SHOWN UNLESS DESIGNATED BY (CA) WHICH INDICATES A CALIFORNIA SIGN CODE.
3. PLANS PROVIDED FOR GENERAL SIGNING OVERVIEW ONLY. FOR SIGN DETAILS NOT SHOWN SEE SIGN DETAIL PLANS.
4. CONTRACTOR SHALL INSTALL TYPE DB MARKERS AT ALL FIRE HYDRANT LOCATIONS.

**STRIPING KEYNOTES**

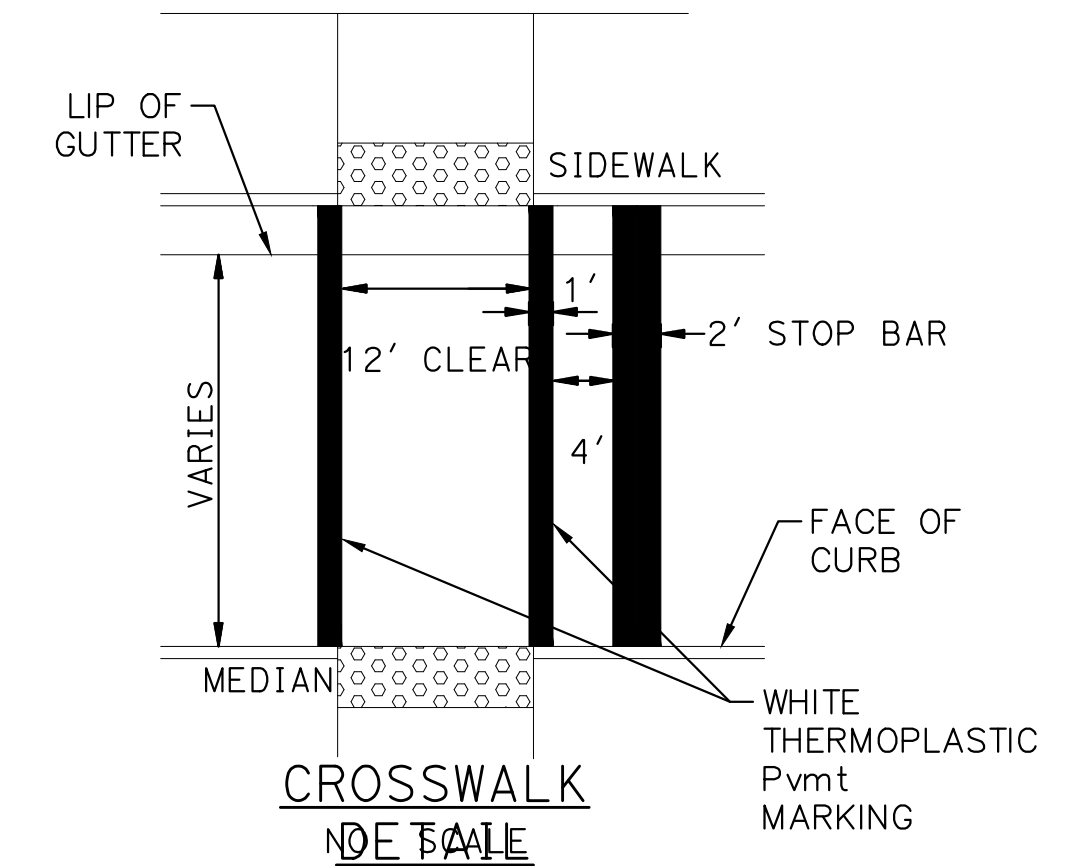
- [LL] 12" WHITE THERMOPLASTIC PAVEMENT MARKING (LIMIT LINE)
- [CW] CROSSWALK THERMOPLASTIC PAVEMENT MARKING SEE DETAIL ON THIS SHEET



SP1  
NO SCALE



SP2  
NO SCALE



CROSSWALK  
NO TABLE

REVISIONS			
NO.	DATE	DESCRIPTION	BY

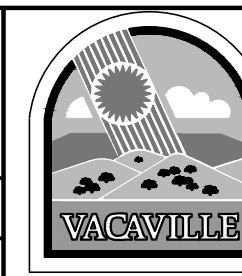


APPROVED BY:  
TIMOTHY F. BURKE R.C.E. 52989  
INTERIM DIRECTOR OF PUBLIC WORKS

**100 % PLANS  
NOT FOR  
CONSTRUCTION**

DRAWN By E. GIBBS Checked J. SCHMAL  
DESIGN By E. GIBBS Checked D. KEHRER  
QUANTITIES By C. DOUD Checked D. KEHRER

**CITY OF VACAVILLE**  
DEPARTMENT OF PUBLIC WORKS



JEPSON PARKWAY - PHASE 3A

LEISURE TOWN RD (ELMIRA TO 556+00)  
SIGNAGE AND STRIPING PLAN

SS-1

Level of Submittal: 100%	CIP:	Project Account:	DISREGARD PRINTS BEARING EARLIER PLOT DATES	DATE PLOTTED: 03/14/24	SHEET: 9	OF: 12
--------------------------	------	------------------	---	------------------------	----------	--------